

MONTHLY MEMBERSHIP PROGRESS REPORT

District A 9

Results as of: 6/30/2020

GMT:

LOCATION ONTARIO

GMT CA

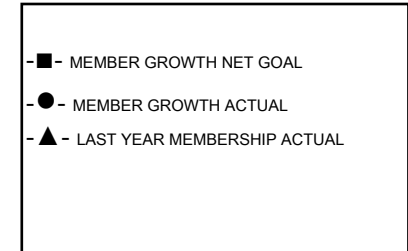
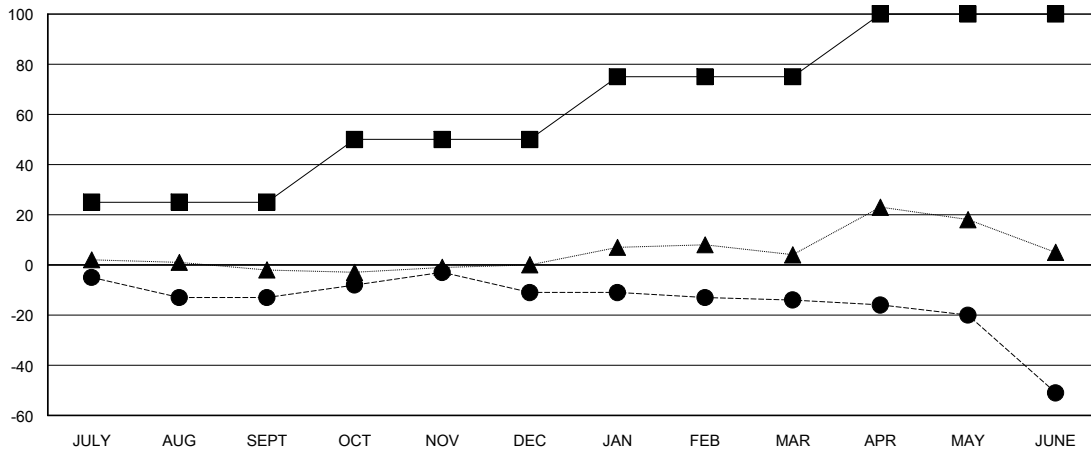
Clubs			
RESULTS FOR 2019-2020			
QUARTER	NEW CLUB GOAL	NEW CLUBS	DROPPED CLUBS
JULY/AUG/SEPT	0	0	0
OCT/NOV/DEC	1	0	0
JAN/FEB/MAR	0	0	0
APR/MAY/JUNE	0	0	0

Members			
RESULTS FOR 2019-2020			
QUARTER	MEMBER GROWTH NET GOAL	MEMBER GROWTH ACTUAL	DROPPED MEMBERS ACTUAL (including transfers)
JULY/AUG/SEPT	25	7	17
OCT/NOV/DEC	25	22	19
JAN/FEB/MAR	25	19	20
APR/MAY/JUNE	25	8	43

GOALS AND ACTUAL NEW CLUBS CUMULATIVE



GOALS AND ACTUAL MEMBERS CUMULATIVE



DROPPED CLUBS: 0	21 CLUBS OF 44 ADDED 1 OR MORE NEW MEMBERS	<u>GENDER DISTRIBUTION</u>	
<u>DROPPED MEMBERS</u>		MALE	821 (73.17%)
DECEASED	24	FEMALE	301 (26.83%)
CLUB CANCELLED	0	TOTAL FAMILY UNIT MEMBERS	
OTHER	75	206	
TOTAL	99	FAMILY MEMBERS PAYING HALF DUES	
		105	

[CLICK HERE FOR CUMULATIVE MEMBERSHIP DATA](#)